



Accuthread Ball Screw is a manufacturer of precision ground ball screws that go beyond just meeting your requirements. We use over 30 years of ball screw engineering and manufacturing experience to get the highest performance for your ball screw.

Ball Screw Manufacturing Capability

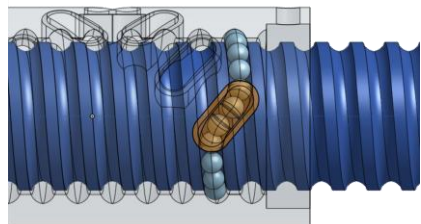
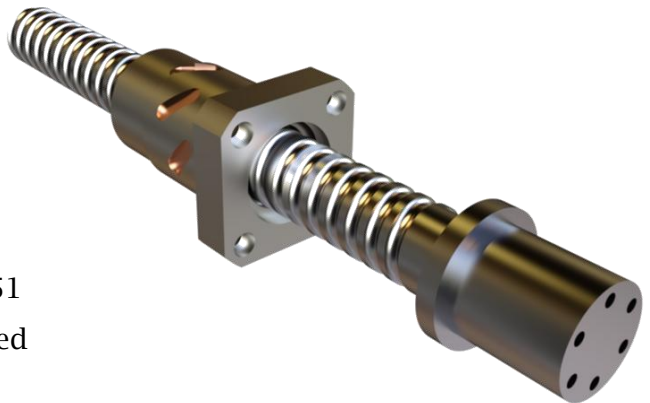
- Ground Ball Screws Inch or metric
- Lead times as quickly as 6 weeks
- True Gothic Arc ball groove form
- Diameters from 0.500 inch to 12.00 inch
- Screw lengths up to 13 feet (4 Meter)
- Lead accuracy to 0.0002 in/ft



Industry Leading 3 Year Warranty

Ball Screw Design

- Custom design or manufactured to print
- Predicted dynamic or static capacity
- Design to ANSI B5.48, ISO-3408 or DIN 69051
- Ball screw raceway analysis including detailed Hertz stress contact
- 3D modeled assembly
- Internal crossover returns from hardened steel





Accuthread is AS-9100 certified and supplies ball screw assemblies to the following markets:

Aerospace & Defense / Automotive / Machine Tool / Automation

Ground Ball Screws

- Diameters: .315 in (8mm) up to 6.00 in (152 mm)
- Lengths up 13 ft (4 meter)
- Lead error: C2 – C5
- Ball screw helix up to 20 degree
- Steel hardened internal returns capable of Ultra High Speed



Metric Rolled Ball Screws

- Diameters: 4 to 100 mm
- Leads: 1 mm to 63 mm (Class C5 – C7)
- High helix (up to 50 x 50)
- Lead times: 3-4 weeks
- Steel hardened internal returns capable of Ultra High Speed
- Custom ball nuts
- Backlash: Standard, Low, Preloaded
- Standard BK & BF Bearing Mounts



Inch Rolled Ball Screws

- Diameters: 0.375 to 4.00 inch
- Lengths up 24 ft
- Lead error: C5 – C10
- Standard or Custom designed ball nuts
- Backlash: Standard, Low, Preloaded
- Standard BK & BF Bearing Mounts

